

## ELIGIBILITY

- The damage must be the direct result of the disaster.
- The damaged facility must be in the declared disaster area.
- Repairs to property must be the legal responsibility of the applicant.



2010 RI Floods AP Photo/Charles Krupa

## DOCUMENTATION

- Take photographs of damages and affected areas.
- Prepare daily activity reports or logs for labor, equipment, materials, and deliveries.
- Notify RIEMA immediately if your scope of work changes.

## ADMINISTRATION

- Participate in Preliminary Damage Assessments (PDAs).
- Attend the Applicant's Briefing.
- Contact other potential applicants within your community who have sustained disaster-related damages and costs and direct them to RIEMA.
- Call your insurance carrier(s) right away. Begin filing and documenting claims and submit Statements of Loss to RIEMA.

## EMERGENCY COMMUNICATIONS

- Contact your local EMA Director.
- Log into WEBEOC:  
<https://webeoc.ri.gov/eoc7/>
- Use RISSON 800 MHz radios when phones and internet are unavailable. Always use Bank A, unless otherwise directed by your dispatcher or management.
  - To contact your local departments (police, fire, DPW), use your town-wide Channel.
  - To contact RIEMA, use RIEMA 1.
  - To contact State Police dispatch (only when all other communications fail) use Bank C/ Channel 8 (Wide Area 2).
- To contact Emergency Managers use EMSTARS (Emergency Management State Radio System).



## ADDITIONAL INFORMATION

RIEMA's website: [www.riema.ri.gov](http://www.riema.ri.gov)

FEMA's website: [www.fema.gov](http://www.fema.gov)

General Preparedness Info: [www.ready.gov](http://www.ready.gov)

Local Weather Forecasts: [www.noaa.gov](http://www.noaa.gov)

# RIEMA's Public Assistance Quick Reference Guide

**"IT DOESN'T HAVE TO BE A DISASTER"**



**Rhode Island Emergency  
Management Agency  
645 New London Avenue  
Cranston, RI 02920**

24-Hour Telephone:  
(401) 946-9996

Fax: (401) 944-1891

[www.riema.ri.gov](http://www.riema.ri.gov)

## WHO ARE ELIGIBLE APPLICANTS?

The Public Assistance program provides cost reimbursement aid to local governments (state, tribal, local, municipal authorities, and school districts) and certain private non-profit agencies (educational institutions, utilities, emergency services, medical facilities, custodial care facilities and others that provide health and safety services of a governmental nature).

All facilities must:

- Be open to the general public.
- Have IRS or state certification of their private, non-profit status.

## WHAT IS AN ELIGIBLE FACILITY?

- Buildings,
- Built or manufactured equipment,
- Certain improved and maintained natural features, which are owned by a public or private non-profit entity are considered eligible.

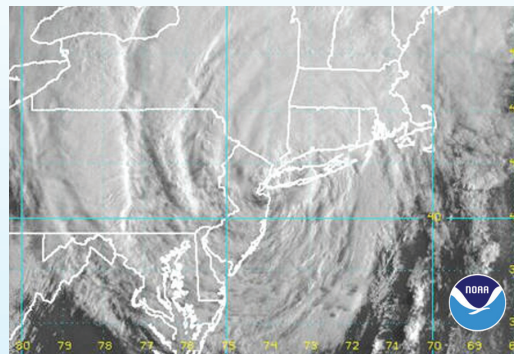
## WHAT ARE ELIGIBLE COSTS?

- Force Account - Applicant's own labor, equipment, and materials.
  - Equipment use (at FEMA use rates).
  - Materials at applicant's cost.
  - Labor at applicant's cost, including fringe benefits. Cost of regular time labor of permanent employees performing debris removal and emergency protective measures are **not** eligible.
- Contract - Reasonable and necessary costs to perform required and FEMA-approved work. **All contracting and procurement laws must be followed. Contracting is the responsibility of the applicant.**

## WHAT IS ELIGIBLE WORK?

The work **must be required** as a result of the Presidentially-declared Major Disaster, be located within the designated disaster area, be the legal responsibility of an eligible applicant, and no other federal agency may have statutory authority to provide funding.

- Debris Removal (Cat. A) - When in the public interest to eliminate an **immediate** threat to life, public health and safety.
- Emergency Protective Measures (Cat. B) - Measures taken to save lives and protect public health and safety. To be eligible for reimbursement, the work performed must eliminate or lessen the immediate threat.
- Permanent Restoration (Cat. C, D, E, F, G) - Restore the disaster-damaged parts of the facility to pre-disaster condition and function. Road systems, water control facilities, buildings and equipment, public utility systems, and parks / recreation facilities are the general categories of property eligible.



Tropical Storm Irene NOAA Satellite

## FEMA CATEGORIES OF WORK

- Category A  
Debris removal **emergency** work
- Category B  
**Emergency** protective measures
- Category C  
Road systems
- Category D  
Water control facilities
- Category E  
Public Buildings and Equipment
- Category F  
Public Utilities
- Category G  
Parks, Recreation & Other



For further information, please visit FEMA's website:  
[www.fema.gov/government/grant/pa/re\\_categories.shtm](http://www.fema.gov/government/grant/pa/re_categories.shtm)