

**Federal Emergency Management
Agency**

**Public Assistance
Program**



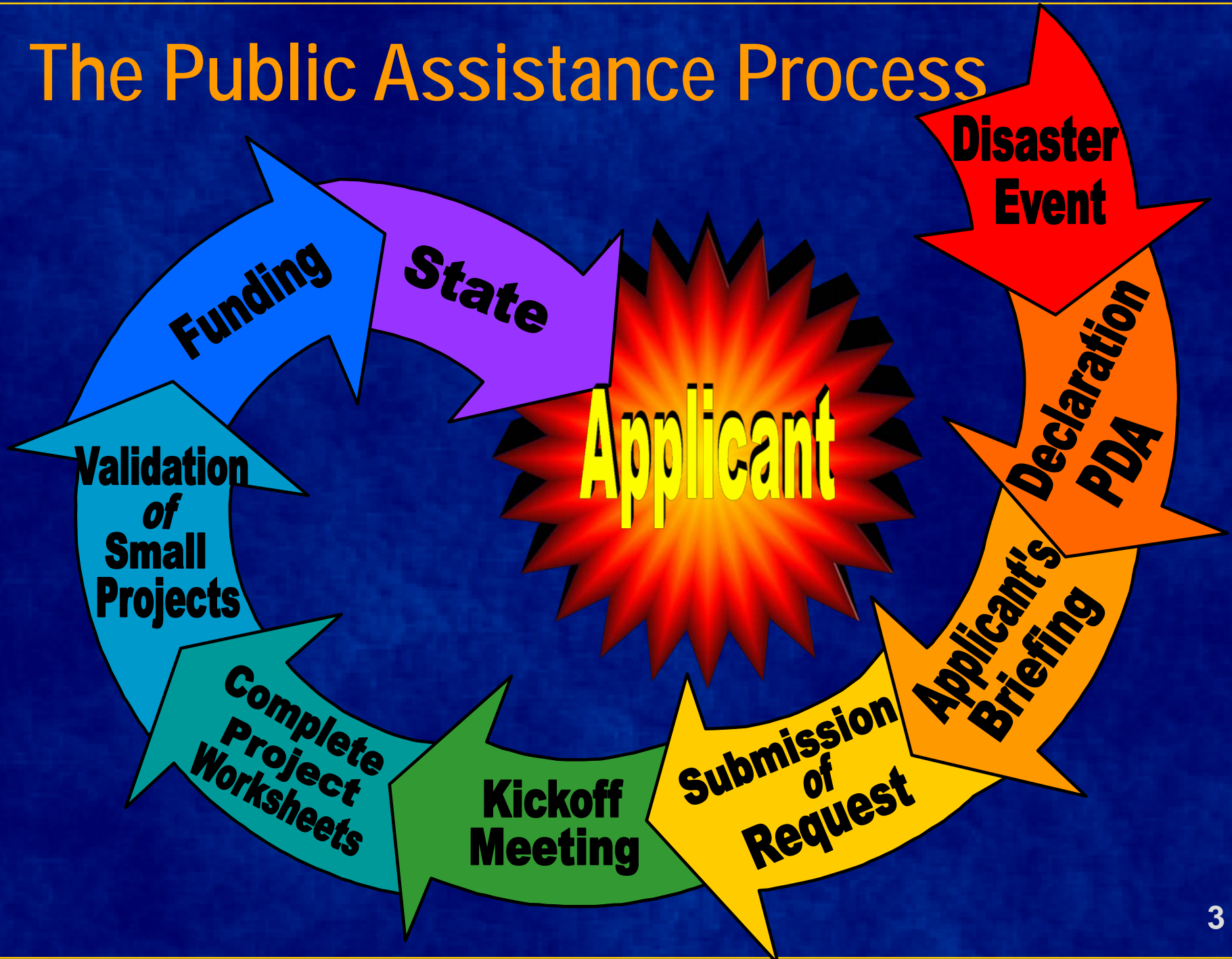
FEMA

**August 26, 2015
Recovery Division**

Public Assistance Program

- The mission of the Federal Emergency Management Agency's (FEMA) Public Assistance (PA) Grant Program is to provide assistance to State, Tribal and Local Governments, and certain types of Private Non-Profit (PNP) organizations so that communities can quickly respond to and recover from major disasters or emergencies declared by the President.
- Through the PA Program, FEMA provides supplemental Federal disaster grant assistance for debris removal, emergency protective measures, and the repair, replacement, or restoration of disaster-damaged, publicly owned facilities and the facilities of certain PNP organizations. The PA Program also encourages protection of these damaged facilities from future events by providing assistance for hazard mitigation measures during the recovery process.

The Public Assistance Process



Declaration Process & PA Indicators

- ✓ **Statewide per Capita**
- ✓ **Countywide per Capita**

FY 2015 Indicators

- **State - \$1.41**
- **County - \$3.56**

Applies to DRs declared on or after 10/1/2014;
adjusted annually to reflect changes in CPI

Statewide Per Capita

FY 2015 - \$1.41

Rhode Island:

**2010 Census Population
(1,052,567) x \$1.41 equals**

\$1,484,120

Countywide Per Capita

FY 2015 - \$3.56

**2010 Census County Population x
\$3.56 equals County per Capita**

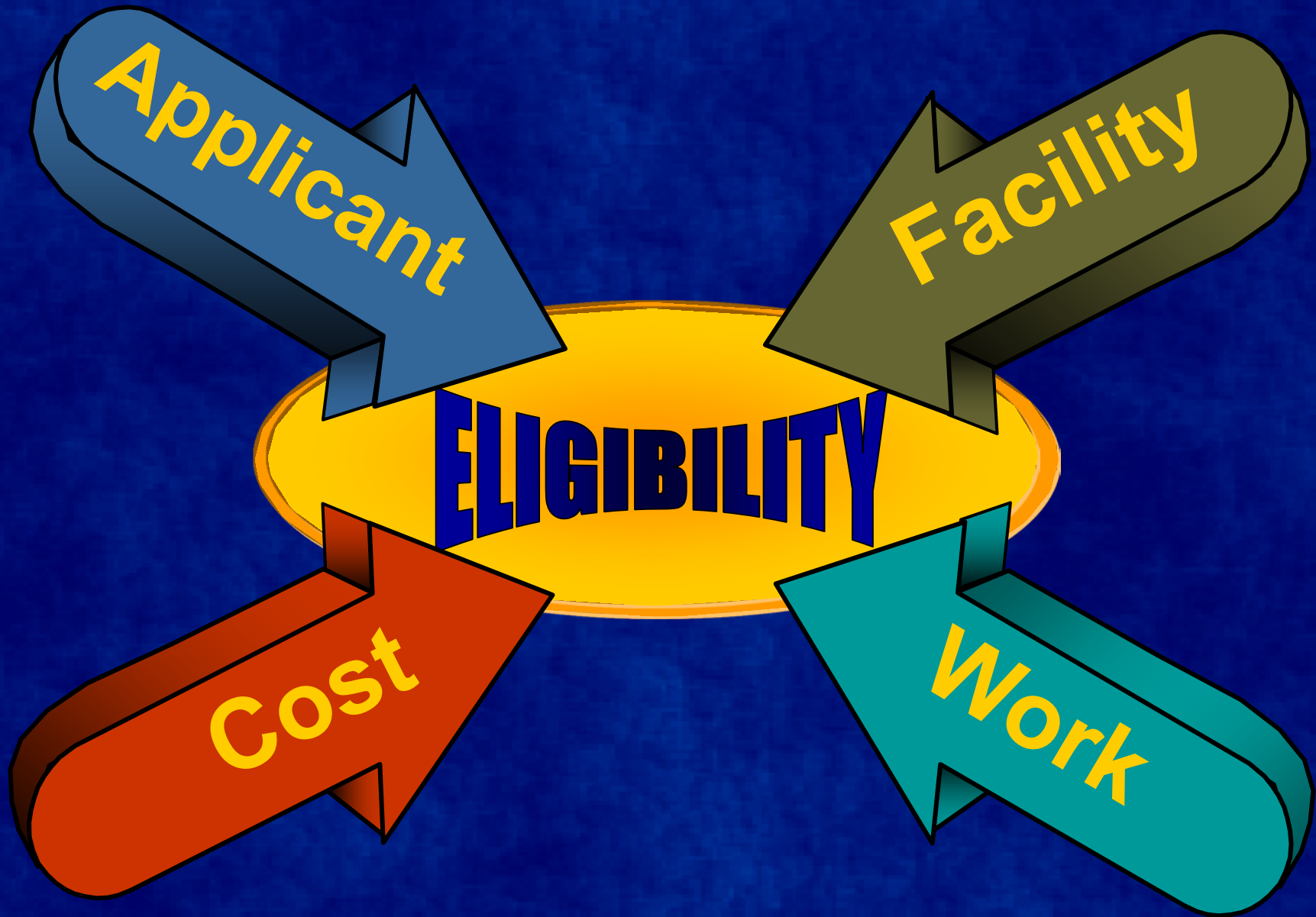
Washington County:

126,979 x 3.56 = \$452,045

Rhode Island County Indicators

Providence County:	\$2,230,935
Bristol County:	\$ 177,555
Kent County:	\$ 591,522
Newport County:	\$ 295,081
Washington County:	\$ 452,045

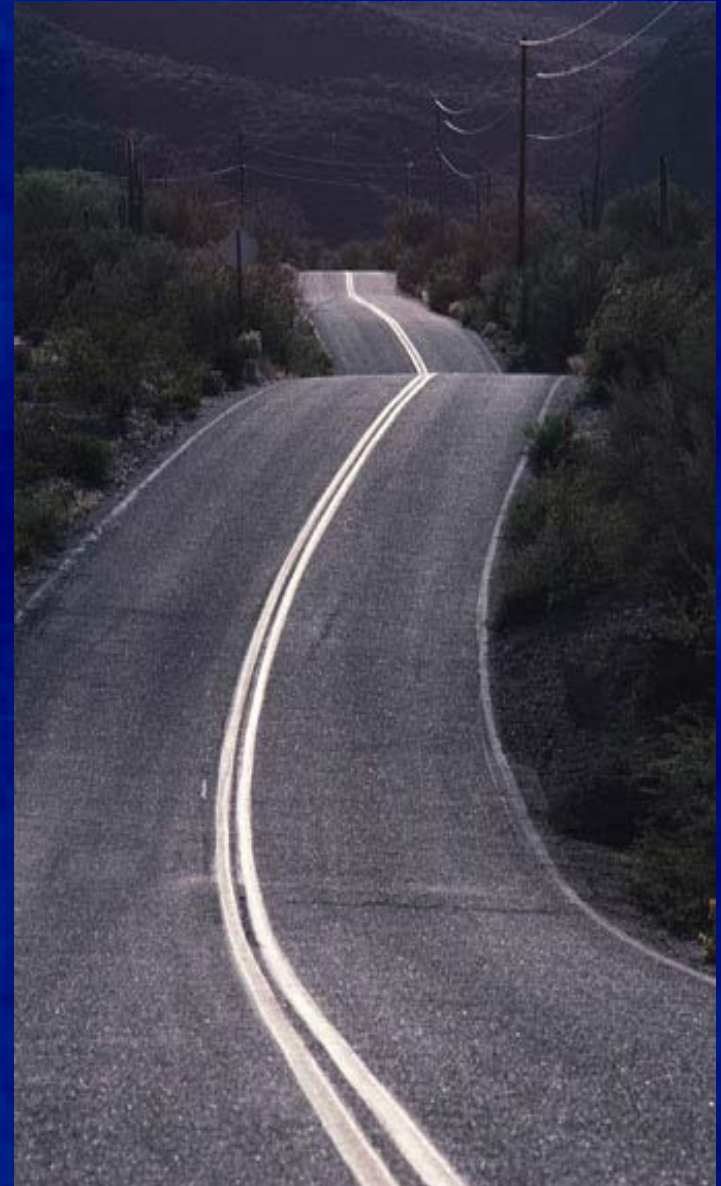
Factors of Eligibility



Types of Eligible Work

Emergency Work

Permanent Work



Emergency Work

Category A – Debris Removal



Debris removal is eligible when:

- **It eliminates an immediate threat to life, health, and safety**
- **It eliminates an immediate threat of significant damage to improved property**
- **It ensures economic recovery of the community and provides a benefit for the community-at-large**

Emergency Work

Category B – Emergency Protective Measures



Emergency Protective Measures are actions taken by a community before, during, and following a disaster to save lives, protect public health and safety, or eliminate immediate threat of significant damage to improved public and private property through cost effective measures.

Permanent Work

Work Categories C - G

- Eligible permanent work:
 - Must repair, restore or replace disaster-damaged facilities in accordance with regulations
 - Must restore to pre-disaster design, capacity and function in accordance with applicable codes and standards
 - Must be required as a result of the disaster
 - May include cost effective hazard mitigation measures

Special Considerations

Special considerations are issues other than program eligibility that could affect the scope of work and funding of a project. These issues include:

Hazard Mitigation

Environmental Requirements

**Historic Preservation &
Cultural Resources**

Floodplain Management

Insurance Requirements

Small Project or Large Project?



Annually updated, \$121,600 is the FY 2015 threshold amount.

Small Projects versus Large Projects

Public Assistance projects are processed as either small or large projects. If the project cost is less than the annually updated cost threshold amount (\$121,600 for FY 2015) the project is processed as a small project. If the project cost equals or exceeds the threshold the project is processed as a large project.

Small Projects	Large Projects
Federal cost share is paid upon project approval.	Federal cost share is paid as work is accomplished.
Funding is based on an initial cost estimate.	Final assistance is based upon actual costs.

44CFR §206.205 Payment of claims

- (a) *Small Projects*. The Grantee will make payment of the Federal share to the subgrantee as soon as practicable after Federal approval of funding.
- (b) *Large projects*. (1) **Payments**. Each large project shall be submitted as soon as practicable after the subgrantee has completed the approved work and requested payment.

Project Completion Time Limits

Time limits for all Projects begin
the date of the disaster
declaration

- ✓ Emergency work - **6** months
- ✓ Permanent work - **18** months

**Additional information can be
obtained from:**

→ FEMA's Web Site (www.fema.gov)